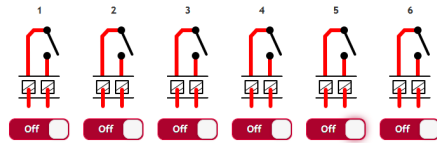


- **GCRL3A (Relay, Contact Closure)**

No configuration is needed for the relays on the GCRL3A module. However, state controls are provided for testing purposes.



6. Repeat for Remaining Modules

Repeat steps 3 through 5 for all Global Connect modules in the chassis.

TROUBLESHOOTING

Global Connect modules can be reset to defaults by depressing the first (left-most) LED/light pipe of each module for 10 seconds at which point the LED will flash rapidly indicating a reset will occur. Additional information and instructions can be found in the Global Connect User Guide. Download from our web site at www.globalcache.com/downloads

CONTACT US



Global Caché
160 East California Street
PO Box 1659
Jacksonville, Oregon 97530 USA

Phone: 541-899-4800
Email: support@globalcache.com
Web: www.globalcache.com

Global Connect Quick Start Guide

This Quick Start Guide covers initial setup for all Global Connect devices. For detailed configuration instructions, please see the Global Connect User Guide on our web site at www.globalcache.com/downloads



GETTING STARTED

1. Connect Global Connect

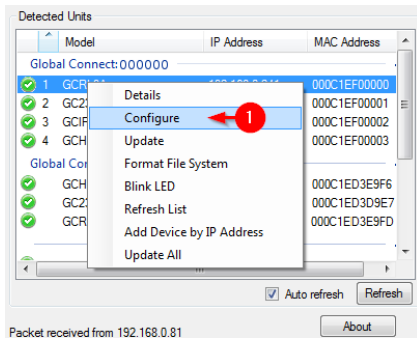
Connect Global Connect to the network via Ethernet. Power the unit by attaching the included power supply or, if using a PoE capable unit, by connecting the unit to a PoE switch on the RJ45 connector marked “PoE IN”.

2. Discover Global Connect Modules

Download and run iHelp (<http://www.globalcache.com/download>). Wait up to 20 seconds for all modules to be discovered.

3. Open Configuration Web Pages

Right click on the first unconfigured module in iHelp and select **Configure** or manually enter the unit’s IP address in a browser address bar.

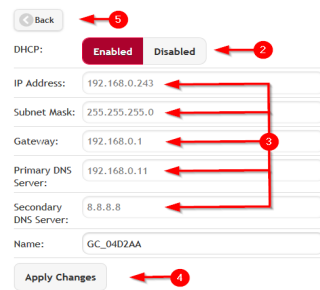


4. Configure IP Address

Global Connect modules default to DHCP enabled. To set a static IP address, select **Network Settings**.

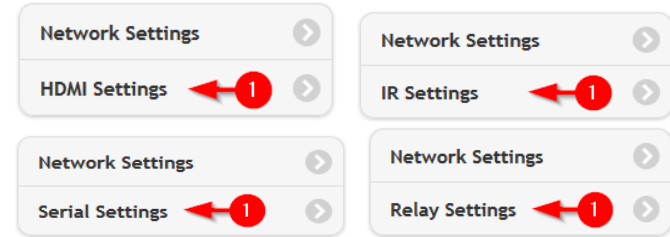
Change DHCP to **Disabled**, and enter the desired IP Address, Subnet Mask, Gateway, and DNS servers.

Click **Apply Changes** followed by **Back** to return to the home page.



5. Configure the Module

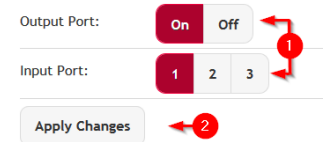
Click the module’s setting tab.



Depending on the type, configure the module for control of the attached devices.

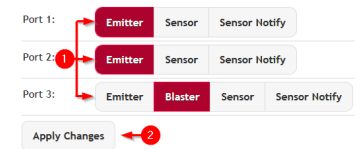
- GCHMX3 (HDMI 3:1 Switch)**

The GCHMX3 module allows for 3:1 HDMI switching, as well as CEC control via CEC injection. No configuration of the switch is necessary. However, to test the switching action set the Output Port to **On** (enabling the switch), then select the input port that corresponds to the desired input device, and select **Apply Changes**.



- GCIR3 (IR Output, Sensor Input)**

The GCIR3 module allows for 3 independent Infrared (IR) outputs or 3 sensor inputs using iTach sensor cables. Each module includes 3 flashing IR emitters and one non-visible IR blaster capable of long-range IR transmission. Plug in the IR emitters/blaster or iTach sensor input cables. If an IR blaster is used plug it into IR port 3. On the configuration webpage select Emitter, Blaster, or one of the sensor options. Then select **Apply Changes**. For sensor cables, Sensor enables polled input while Sensor Notify enables a notification beacon. Refer to the Global Connect User Guide for more information about sensor input modes.



- GC232 (RS232 Serial)**

The GC232 module allows for serial control of RS232 devices. The module must be configured with serial settings that match the connected serial device. These settings can often be found in the connected serial device’s manual. Once these settings have been selected, select **Apply Changes**.

